

| SNR: a general range  
for specialist solutions



Industry







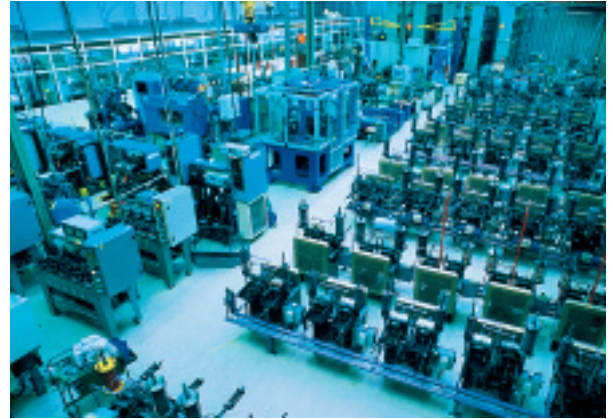
# Manufacturer expertise, leader standing

Although the bearing is usually out of sight, it plays a vital role in your machinery. Though its function, rotation, appears simple, it conceals a vast mechanical complexity.

Analysis and control of mechanical interactions, in-depth knowledge of materials, and customer feedback all constitute part of the "manufacturer culture" that SNR shares with its clients.

While this all-encompassing approach is based on extensive experience, it remains firmly focused on the future to anticipate innovative solutions and develop bearing performance.

Therefore, our emphasis is placed on R&D, because at SNR, we are aware that world-wide



recognition and standing can only be earned through painstaking attention to detail.

Together with our products, we also endeavour to remain in step with your expectations by providing efficient services and ensuring contact availability.

## Faster, further, higher: SNR meets all bearing challenges

*Although it was automobile bearings that forged SNR's reputation through the decades, SNR's products have continuously shown their mettle in other extremely demanding mechanical environments such as industry and aerospace.*

- **Rail:** With over 20 years of experience on all TGV components, SNR, only manufacturer approved at 385km/h on the test bench, contributed to the world speed record at 574.8km/h for axle bearings.
- **Industry:** SNR bearings are recognised in all the main industrial sectors: textile, agriculture, automation, mining, steelworks, paper mills, cement works, agri-food, etc.
- **Aerospace:** A380 - the biggest airliner in the world and the Ariane 5 space launcher are just two examples of major programmes within which SNR develops its technology and know-how.
- **Automotive:** currently 8 out of the 10 best selling vehicles in Europe are fitted with SNR's ASB® instrumented bearings, a standard recognised throughout the world by the profession.





# Bearings: a solution for every application

## Standard bearings

Our standard is excellence: SNR standardized bearings meet the most rigorous quality criteria and benefit from every technological break-through made by our R&D service.

### Spherical roller bearings



- Range optimization,
  - load capacity: 18% greater than competition
  - service life: 75% longer fatigue life

21300 / 22200, 22300 / 23000, 23100, 23200 / 24000, 24100



#### EF800 vibration applications

- One-piece bronze case centered on rolling elements, assembly optimized (reduced tolerance limits on the outer diameter), special radial internal clearance
- For 22300 series: bore up to 170mm

### Radial contact ball bearings



#### Single row

600 / 6000, 6200, 6300, 6400 / 16000 / 61800, 61900 / 62200, 62300, 63000 / S6000.2RS, S6200.2RS, S6300.2RS (Stainless steel)

#### Double row

4200, 4300

### Taper roller bearings



30200, 30300 / 31000, 31300 / 32000, 32200, 32200B, 32300, 32300B / 33000, 33100, 33200

### Self-aligning ball bearings



1200, 1300 / 2200, 2300 / 11200, 11300

### Angular contact ball bearings



Single row: 7200, 7300

4-point contact: OJ300

Double row: 3200, 3300

Double row shielded (ZZ) or sealed (EE): 5200, 5300

### Cylindrical roller bearings



N, NJ, NU, NUP 200 - 300 - 2200 - 2300 / NJ, NU 400

### Spherical roller thrust bearings



• Optimized series 29300E, 29400E

### Thrust ball bearings



51100, 51200, 51300, 51400



## Standard bearings tailored to your needs

MACHLINE comprises products of exceptional quality for machine tool spindle applications. TOPLINE products feature compatibility with operation under extreme temperature or speed conditions.

**TOPLINE**



- For your high temperature, low temperature, high speed bearing operation needs, try the TOPLINE range

Divided into 4 families, this range provides solutions for the most demanding technical applications

**machline**



- High precision bearings manufactured at our production site dedicated to aerospace applications

**Angular contact ball bearings, bore up to 280mm**  
71900 / 7000 / 7200

Available in:

- High speed series (ML)
- Sealed high speed series (MLE)
- Hybrid series with ceramic balls (CH)
- High speed hybrid series (MLCH)
- Sealed high speed hybrid series (MLECH)

Hybrid versions have a greater rigidity, an increased speed and a service life 4 times longer than conventional designs

## Special bearings incorporating several functions

Through the functions incorporated into them, their lubrication mode, their surface treatments, these bearings go beyond rotation to anticipate the future of bearings. They open the way to new applications, facilitating or sweeping aside the usual service life criteria.

### Integration of the mechanical environment



- Integration of connected functions such as power transmission (meshed gears, planet gears, etc.) into the bearing
- Specific modifications for applications where conventional attachment (fitting) is not possible

### Solid lubrication



- Lubsolid, a solid lubricant range optimising particularly difficult applications: oscillation, centrifugation, vacuum, extremely low temperatures, etc.
- Bearing service lives multiplied by a factor of 20

### Surface treatment



- Phosphating and copper plating: prevent fretting corrosion
- Deposition/plating or ceramic rolling bodies: electrical insulation
- Nitriding (surface hardening)





# Bearing Housings: a range unmatched on the market

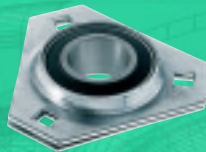
## Bearing - inserts and bearings housings

By combining modular solutions, SNR can offer more than 25,000 part numbers throughout the world. An unrivalled choice that allows us to provide extremely efficient, customized solutions.

### Self-aligning bearing units



• Cast iron



• Stamped steel



• Thermoplastic  
(Polybutylene  
Terephthalate -PBT resin)



• Stainless steel



• Chrome steel insert



• Stainless steel insert

### Special bearing housings

#### Grease lubricated



• ZLG/DLG type



• SD type



• TVN/TN type



• Flanged type

#### Oil lubricated



• SNOL type



• SNOE type



• ZLOE type

### SNC Pillow Blocks



### Specific solutions

We provide a highly focused response to the specific requests of some industries (agri-food, pharmaceutical, etc.) by developing bearings with exclusive characteristics:

- Surface treatment: galvanizing, nickel plating, specific paint, etc.,
- Special attachment or sealing systems,
- Specific shapes and dimensions.

## Sleeves, accessories and components

High quality components for bearing installation / removal.

### Sleeves



• Adapter



• Withdrawal



• Hydraulic

### Nuts and washers



• Washer



• Standard  
nuts



• High precision  
self-locking nuts

### Balls







# Maintenance Services: ensuring optimum bearing service life

## Maintenance products and services

Maintenance is synonymous with bearing "life assurance", this safeguards your productivity. We offer customised, tailored solutions that are never oversized: tools for integrated maintenance or one-off or continuous maintenance programmes.



### Services



### Analysis, monitoring, training: exclusive services

SNR can provide extremely reliable predictive analysis means and is ready to share its know-how through customised training courses. A real investment in your production tool's future.

- **On-site and remote vibration monitoring and expert analysis:** a key component of quality on-condition maintenance that goes beyond merely controlling bearing condition. Working together with 01dB, our specialist partner, SNR can guarantee impartial troubleshooting.
- **Installation / removal of bearings, shaft alignment:** interventions modified to suit each type of application and each sector: paper mills, quarries, steel works, sugar refineries, cement works, agri-food, chair lifts/ ski-lifts, etc.
- **Bearing expertise:** identify damage mechanisms by entrusting analysis to competent and responsive professionals.
- **Modular training:** complete customised content (bearings / mounted units, installation / removal, lubrication, shaft alignment, vibration analysis) taking into consideration the extremely diverse environments in which our solutions are implemented.

### Lubrication



### Installation & removal



### Monitoring & measurement



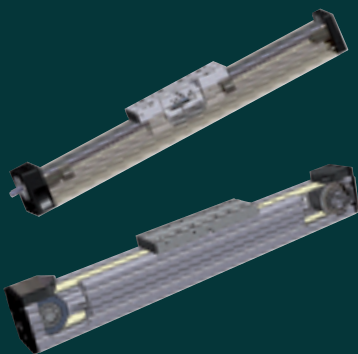


# Linear motion: let experience be your guide

## Linear tables and axis, Linear guide rails

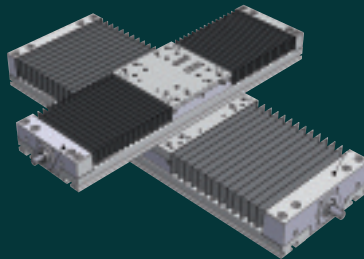
For the linear motion, SNR offers too a complete and innovative range for a large field of industrial applications.

### Linear axis, linear tables



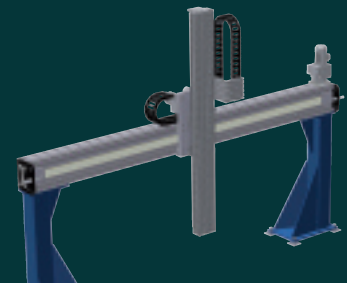
#### Compact Axis

- AXC 40, AXC 60, AXC 80, AXC 120
- Ball screw or belt drive
- Ball guides or rollers guides



#### Linear tables

- AXLT 155, AXLT 225, AXLT 325, AXLT 455
- Ball screw drive
- High load linear guides



#### System axis for gantry applications

- Gantry axis
- Lifting axis
- Telescopic axis

### Linear guides



1

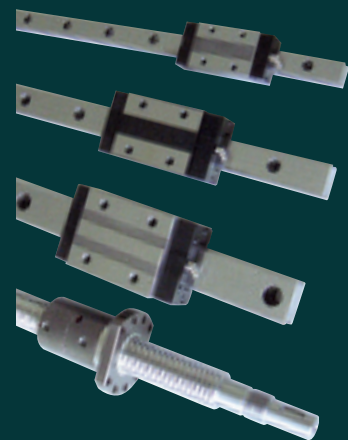
#### Roller guide systems

- Ball bearings, needle bearings and roller bearings

- 1 - Aluminium rails
- 2 - Steel rails



2



#### Ball rails systems, ball screws

- Caged ball guides
- Miniature linear guides
- Ball spline shafts
- Slide rails





contatto  
contatto

お問い合わせ

contacto  
contacto

contact  
contact

[www.snr-contact.com](http://www.snr-contact.com)

الاتصال ب

contacto  
contacto

联系我们  
Lian Xi Wo Men

Kontakt  
Kontakt

AUTOMOTIVE / AEROSPACE / INDUSTRY

LIBELICIS.ALES DOC\_LRANGE\_ARGT.GBa - Non contractual document - SNR Copyright International 05/2007 Printed in France - Photos : Studio Bergoend - Semaphore - Sidel - Usinor - Delphis - 01dB - GraphicObsession.

